

New Bedford Public Schools

Division of Adult/Continuing Education & Summer School

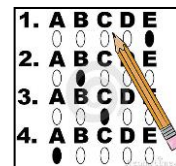
is

An Official State Selected Test Center

for the new

HiSET® Program from ETS

A national high school equivalency testing program!



New Bedford Public Schools will conduct paper-based testing at the following two locations:

Please note: You must report minimally 15 minutes before the scheduled test time!!!!

Day Test Site:

Adult Learning Center
181 Hillman Street
Building 9, Room 203
New Bedford, MA

Day Test Sessions:

8:30* a.m. & 10:45 a.m.

Fall 2018 Test Dates:**

September 6
September 27
October 11
October 25
November 1
November 29
December 13

***Please do not schedule writing for the 8:30 a.m. test session!!!**

****Dates subject to change**

Evening Test Site:

New Bedford High School
Green House, Rooms 114 & 115
230 Hathaway Boulevard
New Bedford, MA

Evening Test Sessions:

6:30 p.m.

Fall 2018 Test Dates**

September 10
October 1
October 15
November 5
December 3

In order to reserve your seat, you must register, pay the test fees and set your test appointments online at:

http://hiset.ets.org/test_takers/

Be sure to check testing requirements!