

New Bedford Public Schools

Division of Adult/Continuing Education & Summer School

is

An Official State Selected Test Center

for the new

HiSET® Program from ETS

A national high school equivalency testing program!

Educational Testing Service (ETS) and Iowa Testing Programs (ITP), two highly respected nonprofit assessment organizations, are proud to introduce the HiSET®.

The HiSET® program includes the elements that are critical to providing out-of-school youth and adults with the best opportunity to demonstrate their high school-level proficiency and their readiness for higher education or the workplace.

Available in both paper- and computer-delivered testing formats and administered at state-selected test centers, the HiSET® program provides an accessible and affordable alternative to the GED® test. (GED is not offered in Massachusetts.)

Reach Your Goals With the New HiSET® Exam

For more information: http://hiset.ets.org/test_takers/

¡Novedades! Puedes ver el sitio [en español](#).

Whether you want to pursue a career or attend college, earning a high school equivalency credential is more important than ever.

The HiSET® exam provides important advantages that give you the best chance to succeed on test day.

Flexible! The HiSET® exam can be taken in multiple formats and multiple languages (English or Spanish), and it provides a number of [accommodations for test takers with disabilities and health-related needs](#). See [Requirements by State](#) for available formats at your local test center.

Affordable! You get more for your money — two free retakes when you purchase a [battery](#) (all five subtests).

Once you pass the HiSET® exam, you'll have the valuable state-issued credential you need to advance your career or continue your education.

Find out more about the new HiSET® exam at http://hiset.ets.org/test_takers/

You'll need to set up a HiSET® Account!!

Creating a HiSET® account gives you quick, easy access to all of your HiSET exam information.

With a HiSET account, you can:

- schedule and pay for a test
- view your appointment confirmation
- reschedule or cancel a test
- view your account history
- view your scores
- update your profile information

If you're unable to create an account or you need help, contact your test center.

Note: When you create your HiSET® account, the name you use to register must exactly match the name printed on your identification documents (excluding accents) that you will present on the day of your test at the test center. Refer to the HiSET® website for further information!!! http://hiset.ets.org/test_takers/

New Bedford Public Schools, Division of Adult/Continuing Education & Summer School

HiSET® Testing Center

181 Hillman Street, Building 9, Room 203, New Bedford, MA

508 997-4511, Ext 33550

New Bedford Public Schools

Division of Adult/Continuing Education & Summer School

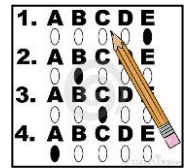
is

An Official State Selected Test Center

for the new

HiSET® Program from ETS

A national high school equivalency testing program!



New Bedford Public Schools will conduct paper-based testing at the following two locations:

Please note: You must report minimally 15 minutes before the scheduled test time!!!!

Day Test Site:

Adult Learning Center
181 Hillman Street
Building 9, Room 203
New Bedford, MA

Day Test Sessions:

8:30* a.m. & 10:45 a.m.

Fall 2019 Test Dates:**

September 19
October 3
October 17
November 21
December 5
December 19

*Please do not schedule writing for the 8:30 a.m. test session!!!

**Dates subject to change

Evening Test Site:

New Bedford High School
Green House, Rooms 114 & 115
230 Hathaway Boulevard
New Bedford, MA

Evening Test Sessions:

6:30 p.m.

Fall 2019 – Evening Test Dates**

September 23
October 7
October 28
November 4
November 18
December 9

In order to reserve your seat, you must register, pay the test fees and set your test appointments online at:

http://hiset.ets.org/test_takers/

Be sure to check testing requirements!