

# New Bedford Public Schools

## Division of Adult/Continuing Education & Summer School

is

## An Official State Selected Test Center

for the new

## **HiSET® Program from ETS**

## **A national high school equivalency testing program!**

Educational Testing Service (ETS) and Iowa Testing Programs (ITP), two highly respected nonprofit assessment organizations, are proud to introduce the *HiSET®*.

The *HiSET®* program includes the elements that are critical to providing out-of-school youth and adults with the best opportunity to demonstrate their high school-level proficiency and their readiness for higher education or the workplace.

Available in both paper- and computer-delivered testing formats and administered at state-selected test centers, the *HiSET®* program provides an accessible and affordable alternative to the GED® test.

## **Reach Your Goals With the New *HiSET®* Exam**

**For more information: [http://hiset.ets.org/test\\_takers/](http://hiset.ets.org/test_takers/)**

**¡Novedades!** Puedes ver el sitio [en español](http://hiset.ets.org/test_takers/).

Whether you want to pursue a career or attend college, earning a high school equivalency credential is more important than ever.

The *HiSET®* exam provides important advantages that give you the best chance to succeed on test day.

**Flexible!** The *HiSET®* exam can be taken in multiple formats and multiple languages (English or Spanish), and it provides a number of [accommodations for test takers with disabilities and health-related needs](#). See [Requirements by State](#) for available formats at your local test center.

**Affordable!** You get more for your money — two free retakes when you purchase a [battery](#) (all five subtests).

Once you pass the *HiSET®* exam, you'll have the valuable state-issued credential you need to advance your career or continue your education.

Find out more about the new *HiSET®* exam at [http://hiset.ets.org/test\\_takers/](http://hiset.ets.org/test_takers/)

## **You'll need to set up a *HiSET®* Account!!**

Creating a *HiSET®* account gives you quick, easy access to all of your HiSET exam information.

With a HiSET account, you can:

- schedule and pay for a test
- view your appointment confirmation
- reschedule or cancel a test
- view your account history
- view your scores
- update your profile information

If you're unable to create an account or you need help, contact your test center.

**Note:** When you create your *HiSET®* account, the name you use to register must exactly match the name printed on your identification documents (excluding accents) that you will present on the day of your test at the test center. Refer to the *HiSET®* website for further information!!! [http://hiset.ets.org/test\\_takers/](http://hiset.ets.org/test_takers/)

---

New Bedford Public Schools, Division of Adult/Continuing Education & Summer School

**HiSET® Testing Center**

181 Hillman Street, Building 9, Room 203, New Bedford, MA

508 997-4511, Ext 33550

# New Bedford Public Schools

Division of Adult/Continuing Education & Summer School

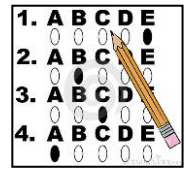
is

An Official State Selected Test Center

for the new

**HiSET® Program from ETS**

**A national high school equivalency testing program!**



**New Bedford Public Schools will conduct paper-based testing at the following two locations:**

**Please note: You must report minimally 15 minutes before the scheduled test time!!!!**

**Day Test Site:**

Adult Learning Center  
181 Hillman Street  
Building 9, Room 203  
New Bedford, MA

**Day Test Sessions:**

8:30\* a.m. & 10:45 a.m.

**Winter 2020 - Test Dates\*\*:**

January 9  
January 23  
February 13  
February 27  
March 12  
March 26  
April 2  
April 16

\*Please **do not schedule writing** for the **8:30 a.m. test session!!!**

\*\*Dates subject to change

**Evening Test Site:**

New Bedford High School  
Green House, Rooms 114 & 115  
230 Hathaway Boulevard  
New Bedford, MA

**Evening Test Sessions:**

6:30 p.m.

**Winter 2020 Evening - Test Dates\*\***

January 13  
January 27  
February 3  
February 24  
March 16  
March 30  
April 6  
April 27

In order to reserve your seat, you must register, pay the test fees and set your test appointments online at:

[http://hiset.ets.org/test\\_takers/](http://hiset.ets.org/test_takers/)

**Be sure to check testing requirements!**

New Bedford Public Schools, Division of Adult/Continuing Education & Summer School

HiSET® Testing Program

181 Hillman Street, Building 9, Room 203, New Bedford, MA

508 997-4511, Ext 33550