

New Bedford Public Schools

Division of Adult/Continuing Education & Summer School

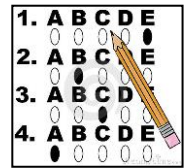
is

An Official State Selected Test Center

for the new

HiSET® Program from ETS

A national high school equivalency testing program!



New Bedford Public Schools will conduct paper-based testing at the following two locations:

Please note: You must report minimally 15 minutes before the scheduled test time!!!!

You will not be admitted if you are late!

Day Test Site:

Adult Learning Center
181 Hillman Street
Building 9, Room 203
New Bedford, MA

Day Test Sessions:

8:30* a.m. & 10:45 a.m.

Test Dates:**

September 7, 2017
September 21, 2017
October 12, 2017
October 26, 2017
November 2, 2017
November 30, 2017
December 14, 2017

***Please do not schedule writing for the 8:30 a.m. test session!!!**

****Dates subject to change**

Evening Test Site:

New Bedford High School
Green House, Rooms 114 & 115
230 Hathaway Boulevard
New Bedford, MA

Evening Test Sessions:

6:30 p.m.

Test Dates**

September 25, 2017
October 2, 2017
October 16, 2017
November 13, 2017
November 20, 2017
December 4, 2017
December 18, 2017

In order to reserve your seat, you must register, pay the test fees and set your test appointments online at:

http://hiset.ets.org/test_takers/

Be sure to check testing requirements!

New Bedford Public Schools, Division of Adult/Continuing Education & Summer School

HiSET® Testing Program

181 Hillman Street, Building 9, Room 203, New Bedford, MA

508 997-4511, Ext 2419